



Build Your Wealth in 2024 with a 13-Month or 18-Month Certificate

Grow your savings with our new 13-month and 18-month share certificates, available on January 16. Don't wait – once this offer is available, it won't last long!

18-Month

- Minimum balance of \$100,000 to open and earn dividends
- APY of 5.30% dividend rate of 5.175%

13-Month

- No minimum balance requirement to open and earn dividends
- APY of 5.00% dividend rate of 4.889%

APY = Annual Percentage Yield. All dividend rates and APY may change at any time. See rate table online for details.



Open an Account Online

Open an additional GLCU account online anytime, anywhere. You can easily fund your new account from an existing GLCU account, or an account at another financial institution. Start saving for next year's holiday festivities with a holiday savings account, achieve your short- or long-term savings goals with a share certificate, and more.

APPLY NOW



Olive Is Here to Help You 24/7

Our AI-powered bot Olive can help you with your banking needs 24/7. Give her a call or chat online anytime to complete transactions, get your questions answered, and learn more about our financial products and services.

CONTACT US



Enhanced Debit Card Features Coming Soon!

Soon, you'll be able to tap to pay with your GLCU debit card. Be on the lookout for a new contactless debit card in early 2024.



Financing Your Education Webinar Recording Available

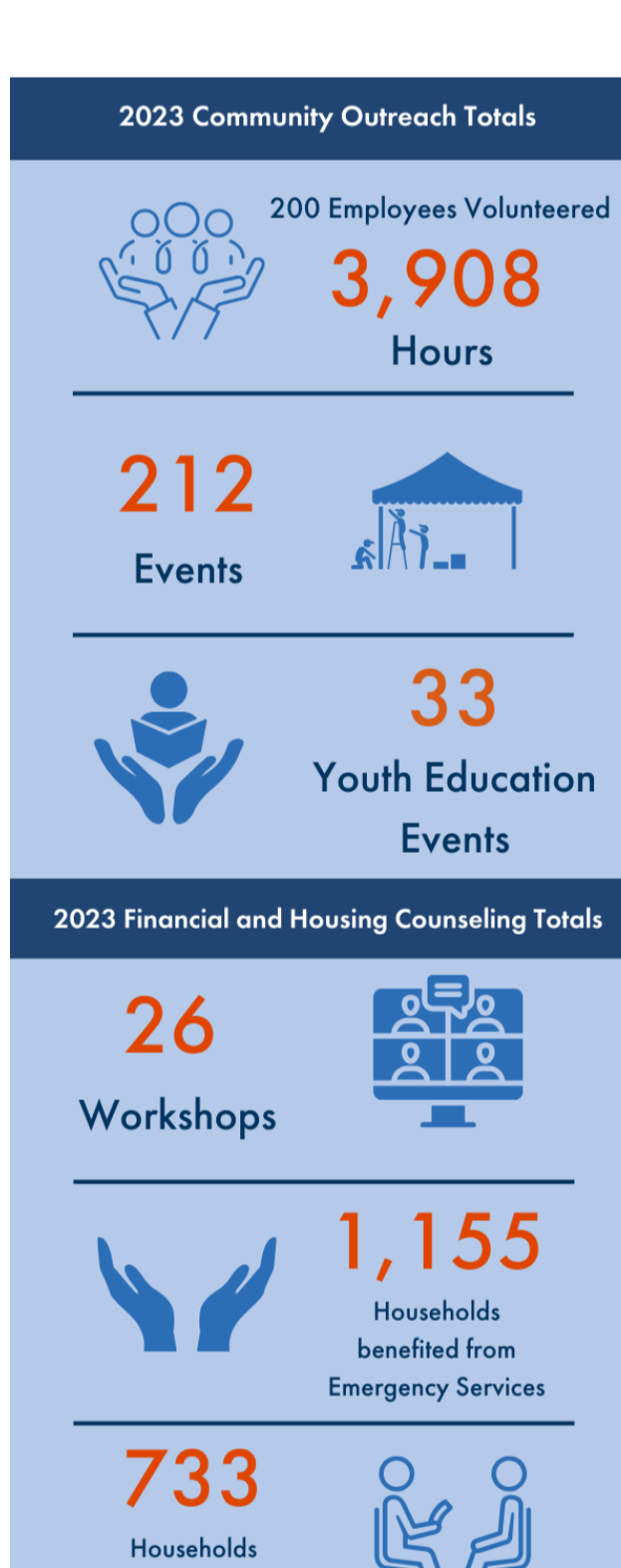
If you missed last month's webinar, it's not too late to learn about financial planning for college. Presented by the GLCU Foundation Housing and Financial Counselors and the Illinois Student Assistance Commission, this webinar will help you navigate the complexities of paying for college. For more information on how to pay for college, [read our blog](#).

WATCH VIDEO



Outreach Year-End Recap

GLCU's Great Wave Employee Volunteer program and GLCU's Foundation for Financial Empowerment have been busy supporting efforts in our communities. GLCU and the GLCU Foundation offer a heartfelt "Thank you" to our employees for embracing the credit union movement's "people helping people" philosophy in their day-to-day lives.



LEARN MORE



Come Work with Us!

Start the new year with a new and rewarding career! As an equal opportunity employer, GLCU offers employees an environment where you can learn, grow and develop your career. We also believe in giving back to the community and provide volunteering opportunities where you can make a real difference in local communities. Check out all the awesome benefits of being part of the GLCU team and learn about our open positions.

LEARN MORE

Where We'll Be Volunteering

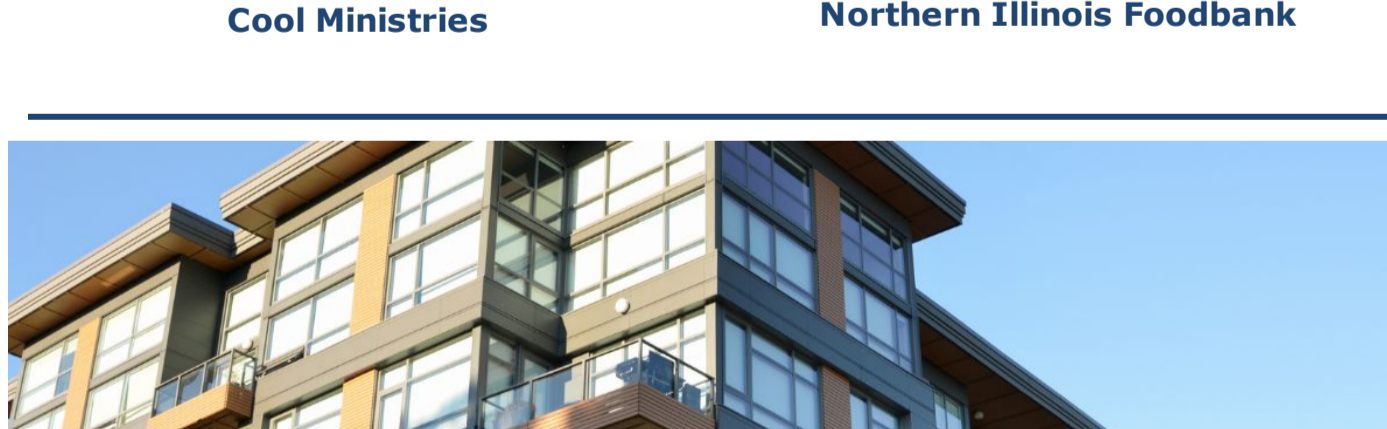
The GLCU employees are hard at work in local communities. Here are photos of just a few of the places we're volunteering in January.



Cool Ministries



Northern Illinois Foodbank

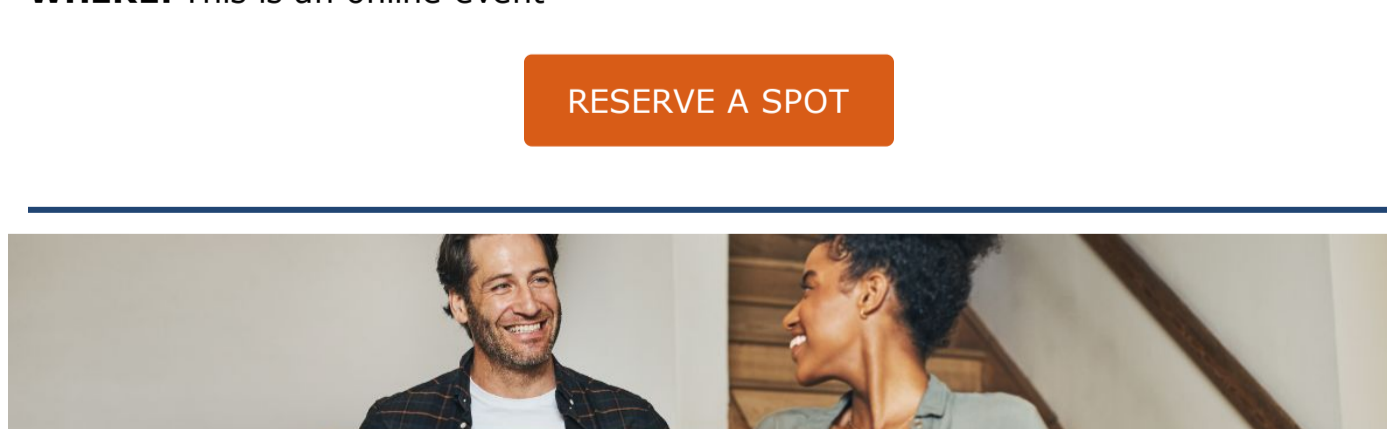


Free Tenant Rights Webinar

Learn about the GLCU, responsibilities, and protections in this online workshop presented by the GLCU Foundation for Financial Empowerment.

WHEN: Saturday, January 13 from 11am - 12pm
WHERE: This is an online event

RESERVE A SPOT



First Time Homebuyer's Seminar

Discover how to qualify for various mortgage loan programs and down payment assistance in this free workshop.

WHEN: Saturday, January 27 from 9am - 3pm
WHERE: The Chicago Public Library, Austin Branch 5615 W. Race Avenue, Chicago, IL 60644

REGISTER NOW

Qualification required for membership, loans, financing, and select products & services. GLCU is federally insured by NCUA, NMLS #: 528665.

(800) 982-7850 www.glcu.org
P.O. Box 1289, Bannockburn, IL 60015
© 2024 Great Lakes Credit Union.
All Rights Reserved. This is an advertisement.

You are receiving this solicitation as part of your Great Lakes Credit Union membership.

